



For detailed information

## Employment in Japan



### 1 Information Gathering

To succeed in finding employment in Japan, students should start job-hunting activities as early as possible. Sufficient information is also essential to effectively find employment. There are various means to access to employment information, such as career support centers of respective universities/schools, job search websites of private companies and the official student organizations indicated below, so students are highly recommended to actively obtain the necessary information before starting job hunting activities.



### 2 Internship

Internship is a system that allows students who are yet to graduate to gain experience in positions related to their future career or major by working at companies. Some universities recognize internships as part of education and give credit for it. Inquire directly with your school about the availability of internship programs and the possibility of gaining credits. The internship aims to provide an opportunity for students to grow and gain practical experience for their future career, and internships are often unpaid.

**Advantages of Internship** 1. Gaining firsthand experience of working practices in Japan, 2. Learning business manners in Japan, 3. Industry and job research



### 3 Research on Business Fields/Companies

"Business fields" such as manufacturers, trading companies and distributors/wholesalers, refer to "industry categorized by business activity." Research on individual business fields/companies is the first step of job-hunting activities; students are recommended to know what kinds of jobs exist in society so that they can obtain employment in their desirable job/business field.



### 4 Entry

To proceed to the selection process, you first need to submit entry sheets. You will receive company information, recruitment information, and information about seminars and events via email or postal mail from companies to which you have sent entry sheets. Submitting an entry sheet does not mean you have applied for that company, so do not hesitate to submit entry sheets to companies you are interested in.



### 5 Company Information Sessions

Companies hold information sessions aimed to recruit students. By attending such events, you will understand the companies and their recruitment policies. Joint company information sessions are also held, where many companies gather at a single venue. Frequently visit your school's career department, etc. so as not to miss information on recruitment seminars and events.



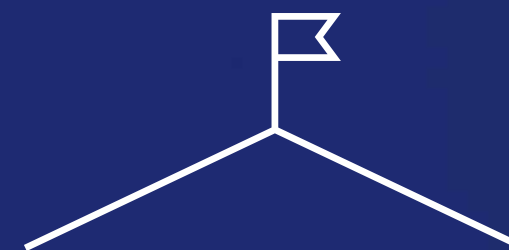
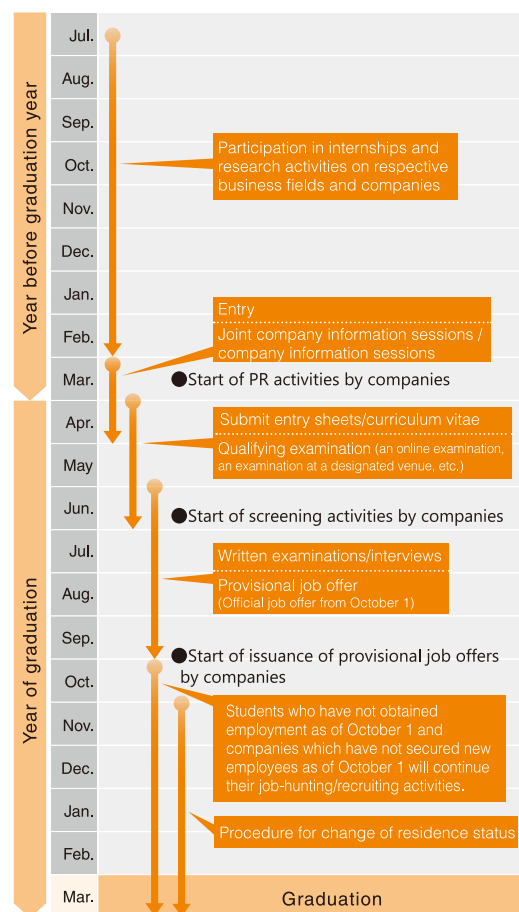
### 6 Written Examinations/Interviews

After applying for companies by submitting the required entry sheets, curriculum vitae and other application documents, you will take written examinations. The written examinations include an aptitude test to assess the applicant's behavior characteristics and judgment, a general knowledge test to measure the applicant's basic academic ability and knowledge, and an essay exam to assess the applicant's logical thinking skills and creativity. You will also have interviews, in which you must explain the reasons for your application and present your selling points. Generally, written examinations and interviews are conducted in Japanese. So you should be used to reading and writing in Japanese, and should practice sufficiently for the interviews.



### 7 Procedure for Change of Residence Status/Job Offer

In order for international students to take full-time employment in Japan, they have to change their status of residence from "Student" to a status of residence that allows full-time employment. Please note that it may be difficult to change your status of residence if the type of job in which you are to be engaged in the company is unrelated to your major or subjects you studied. The screening process for change of status of residence takes one to three months, so once you receive a tentative job offer, you should start the procedures as soon as possible so that you can start working in April.



## STUDY in KITAKYUSHU

Located at the gateway to Kyushu, across the Kanmon Strait from Japan's mainland of Honshu, Kitakyushu City in Fukuoka Prefecture is an ordinance-designated city with a population of 940,000.

Kitakyushu is a place where you can enjoy not only urban lifestyle, but also rural lifestyle surrounded by rich nature. We will introduce Kitakyushu City to international students planning to study in this attractive city.

### Northernmost city of Kyushu! Ordinance-designated city with the second largest population in Kyushu

Kitakyushu City in Fukuoka Prefecture is the northernmost city of Kyushu. With the second largest population in Kyushu following Fukuoka City, Kitakyushu is one of the major cities in Kyushu. In addition to being the center of an area known as the Kitakyushu metropolitan area, Kitakyushu City forms, together with its neighboring city Shimonoseki (Yamaguchi Prefecture), the Kanmon metropolitan area.



## PROCEDURE Procedures for Studying in Japan

There are various procedures you need to complete to study in Japan, including application for entrance examinations and immigration procedures. Be sure to complete all the required procedures without fail.



For detailed information



Click here for more information and details. Interviews with international students who are currently studying in Kitakyushu City and alumni (old boys/ladies) who have studied and found employment in Kitakyushu City are also available!

Planning and Coordination Bureau, Kitakyushu City Jonai 1-1, Kokurakita-ku, Kitakyushu City 〒803-8501 Tel: +81(0)93-582-2146

STUDY in KITAKYUSHU Search

For detailed information ▶▶





# ABOUT KITAKYUSHU CITY

What kind of city is Kitakyushu?

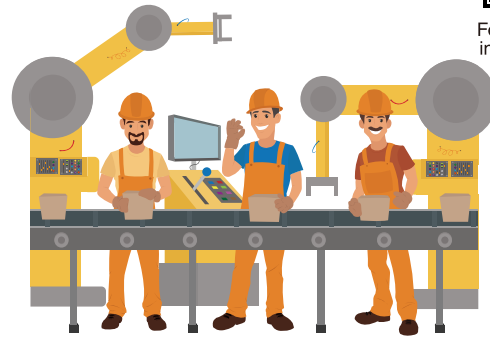


For detailed information



## Northernmost city of Kyushu! Ordinance-designated city with the second largest population in Kyushu

Kitakyushu City in Fukuoka Prefecture is the northernmost city of Kyushu. With the second largest population in Kyushu following Fukuoka City, Kitakyushu is one of the major cities in Kyushu. In addition to being the center of an area known as the Kitakyushu metropolitan area, Kitakyushu City forms, together with its neighboring city Shimonoseki (Yamaguchi Prefecture), the Kanmon metropolitan area.

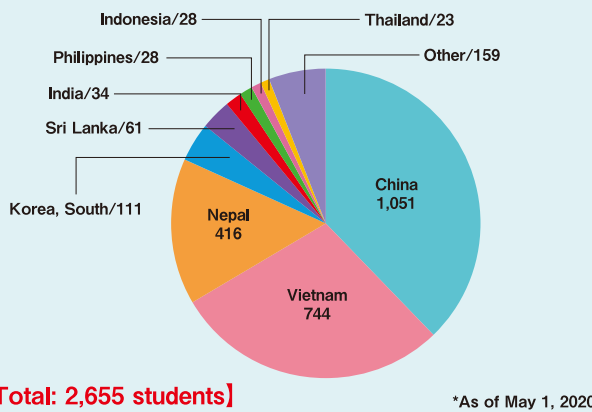


## 2 International students in Kitakyushu!

Every year the number of international students in Kitakyushu grows, as students from China, Vietnam, Nepal and around the world come to study here. In addition to their studies and daily life, there is also an increasing number of opportunities for international students to interact with each other at a variety of events.



### International students (including technical school students) studying in Kitakyushu City by country/region



# LIFE



## Living Costs in Kitakyushu City

Interviews with international students in Kitakyushu about their monthly expenditure, which will be helpful for prospective international students to know the actual living expenses in Kitakyushu.

Examples of accommodation costs for international students living in Kitakyushu City

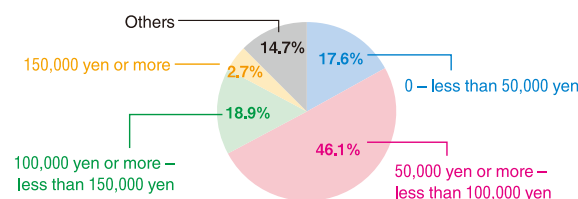
	Residence status	Housing, utilities (per month)	Food (per month)	Mobile phone, recreation, etc. (per month)
Student A	Living with a roommate in a student dormitory	¥10,000 to ¥20,000		
Student B	Living alone in a student dormitory	¥20,000 to ¥40,000	¥20,000 to ¥30,000	¥10,000 to ¥30,000
Student C	Living with a roommate in private accommodation	¥15,000 to ¥35,000		
Student D	Living alone in private accommodation	¥35,000 to ¥45,000		



## 2 Income

0 – less than 50,000 yen per month: 17.6%;  
50,000 yen or more – less than 100,000 yen: 46.1%;  
100,000 yen or more – less than 150,000 yen: 18.9%;  
150,000 yen or more: 2.7%

The minimum wage in Fukuoka Prefecture: 814 yen per hour  
\*Revised on October 1, 2019  
814 yen x 28 hours a week x 4 weeks ÷ about 91,000 yen/month



## 3 Kitakyushu International Association (KIA)

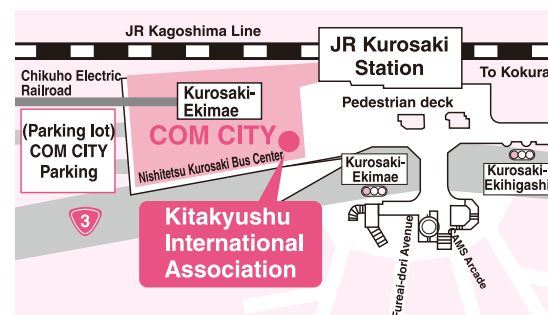
The association supports foreign citizens through, for example, consultation services and assistance with Japanese language learning, and also operates host family and international exchange programs.

### Multicultural One-Stop Information Center

Consultation services on daily life are provided for foreign residents free of charge.



- Kurosaki 3-15-3, Yahatanishi, Kitakyushu-shi ComCity 3F
- TEL/093-643-5931 ●FAX/093-643-6466
- Open: 9:00 to 17:30/9:00~17:30
- Closed: Sundays, national holidays, and year-end and New Year holidays



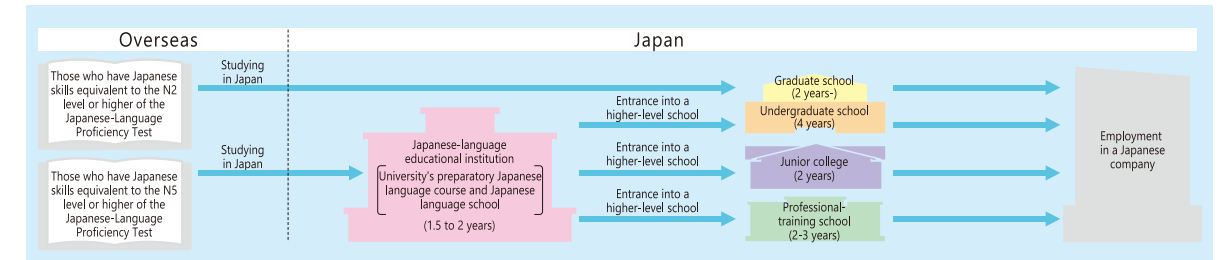
# STUDY

Studying in Kitakyushu



## General process from studying in Japan, entrance into a higher-level school, to employment in a Japanese company

First make a plan of your study in Kitakyushu. Make clear what you want to study in Kitakyushu. There are many international students who take employment in companies in Kitakyushu after graduation. Think what you want to learn and what kind of job you want to do in the future, and search for schools in Kitakyushu City.



\*There are some universities/schools that offer a Japanese-language course intended for international students who have not acquired Japanese skills equivalent to the N2(JLPT) level of the Japanese-Language Proficiency Test at the time of admission



## 2 School List

There are many schools in Kitakyushu City, including universities and junior colleges, professional training colleges where you can learn specialized knowledge and skills, and Japanese schools where you can learn the Japanese language from daily conversation level to college entrance level and business level. Universities and professional training colleges conduct most lessons in Japanese. If your Japanese language proficiency is not sufficient, you must first learn Japanese language at a Japanese language school or in a Japanese language course offered by a university or college.

H Humanities S Science

<b>YMCA Kitakyushu YMCA</b> Japanese language course Japanese-language educational institution	<b>Kitakyushu Japan Culture Institute</b> Higher Education Course Japanese-language educational institution	<b>NGG Nihon Gogaku Gakko</b> Higher Education Course Japanese-language educational institution	<b>Orio Aishin Junior College</b> Department of Economics; Department of Japanese Language Japanese-language educational institution Junior college H
<b>OHARA Ohara Automobile Technology College</b> Japanese Language Course,Civil Engineering, automobile maintenance Course Japanese-language educational institution Professional-training school S	<b>KMS Kyushu Medical Sports Vocational School</b> Japanese Language Course,Sports Trainer Nursery Welfare Course,Hospitality Concierge Course Japanese-language educational institution Professional-training school S H	<b>Kyushu Business School</b> IT Faculty,Japanese Language Faculty Professional-training school H	<b>OHARA Ohara Bookkeeping College</b> Accounting faculty, International Business faculty Professional-training school H
<b>KITAJIDAI Kitakyushu Auto Mobile College</b> 1st Class Motor Vehicle Repair and Maintenance Mechanic Department; 2nd Class Motor Vehicle Repair and Maintenance Mechanic Department Professional-training school S	<b>ASO Business Computer Kitakyushu College</b> System Engineers,Game Development, Computer Systems,Office Business, Computer Graphic Design Professional-training school S	<b>Kyushu Techno College</b> Department of International Information Business Professional-training school H	
<b>University of Occupational and Environmental Health, Japan</b> Graduate School of Medicine of the Graduate School of Medical Science Undergraduate school Graduate school S	<b>Kyushu Kyoritsu University</b> Faculty of Economics Department of Economics/Business Management Undergraduate school Graduate school H	<b>Kyushu International University</b> Faculty of Law Faculty of Contemporary Business Graduate school Undergraduate school Graduate school H	<b>National University Corporation Kyushu Institute of Technology</b> School of Engineering,Graduate School of Engineering, Graduate School of Computer Science and Systems Engineering, Graduate School of Life Science and Systems Engineering Undergraduate school Graduate school S
<b>Kyushu Nutrition Welfare University</b> Faculty of Food and Nutrition, Faculty of Rehabilitation,Graduate school Undergraduate school Graduate school S	<b>Nishinippon Institute of Technology</b> Faculty of Engineering, Faculty of Design,Graduate school Undergraduate school Graduate school S	<b>Fukuoka University</b> Graduate school Recycling and Eco-Technology Program Undergraduate school Graduate school S	<b>The University of Kitakyushu</b> Faculty of Foreign Studies, Faculty of Economics and Business Administration, Faculty of Humanities,Faculty of Law, Faculty of Environmental Engineering,Graduate school Undergraduate school Graduate school S H
<b>Kyushu Dental University</b> School of Dentistry, Faculty of Dentistry; School of Oral Health Sciences, Faculty of Dentistry; Graduate School of Dentistry Undergraduate school Graduate school S	<b>Kyushu Women's University &amp; Kyushu Women's Junior College</b> Faculty of Home Economics, Faculty of Humanities,Junior college Undergraduate school Junior college H	<b>Seinan Jo Gakuin University and Seinan Jo Gakuin University Junior College</b> Faculty of Humanities Junior college Undergraduate school Junior college H	<b>Graduate School of Information, Production and Systems, Waseda University</b> Faculty of Humanities Junior college Graduate school S